



**ApexSQL Enforce** is a revolutionary new solution for Industry Best Practices adherence and Custom Standards enforcements for SQL Server Databases. Unlike the hard coded implementation of Microsoft's SQL Server Best Practices Analyzer that limits users to "canned" rules and offer no customization, ApexSQL Enforce empowers users to create complex custom rules by leveraging the power of full programming languages like C# and VB.NET.

ApexSQL Enforce comes with a ready-to-use Best Practices rulebase. You can use this rulebase, create your own from scratch, or even share your rules and rulebases with your peers.

Poorly designed and non-standard databases will have nowhere to hide as all their problems are exposed by ApexSQL Enforce!

### ApexSQL Enforce fills a critical need for the SQL Community

SQL Developers and DBAs have long lacked the powerful tools for automated review that are available to .NET developers through tools like FxCop. Microsoft's Best Practices Analyzer did little to bridge this gap and left many disappointed. Microsoft indicates no plans for custom rules or T-SQL based rules—

#### "Will we be able to create our own rules?"

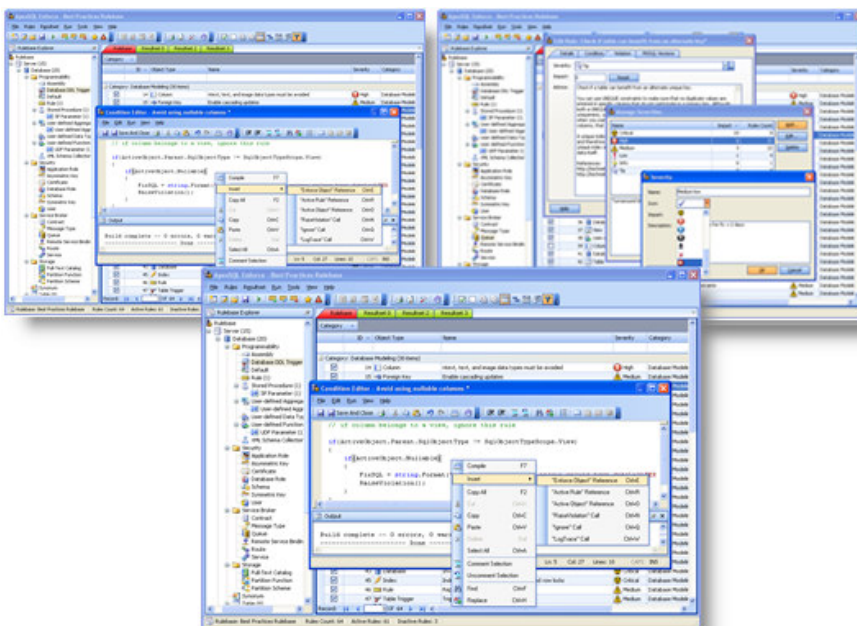
*No. Unfortunately, we cannot support this. The SQL Server Best Practices Analyzer is using an extensible platform that was built by the Microsoft Exchange team. It is fairly easy to extend, but it is not an expected part of SQL Server's strategic future. Ultimately, this means that if we allowed you to write custom rules, you'd expect it to work with SQL Server "Katmai" and SQL Server "Katmai" + 1. We haven't figured out a way for custom rules to be supported long-term... so, for now, we are not going to allow it."*

-From SQL Server Manageability Team's Blog

**ApexSQL Enforce** has been designed specifically to fill this critical gap.

## Use ApexSQL Enforce to:

- Identify design problems early in the design process
- Ensure adherence to design standards in "real time"; reviews can be ad hoc, scheduled, and/or unattended
- Educate developers to "Industry Best Practices" and Company Standards.
- Facilitate upgrades to new versions of SQL Server by identifying potential conversion problems before the database is ported.
- Enhance your database's reliability, portability, and maintainability
- Allows instant, objective, unbiased and repeatable design reviews and audits
- Automatically reverse or fix detected violations using generated "FixSQL" scripts
- Enforce Naming conventions and ensure that SQL reserved words and special characters are not used



## Fully Customizable Rules

No longer are SQL Developers constrained by hard coded solutions that limit audits to "canned" rules. ApexSQL Enforce empowers developers to write their own rules, leveraging the full power of .NET programming languages, including parsing, runtime errors and intellisprompt.

## Includes a Complete Industry "Best Practices" rulebase

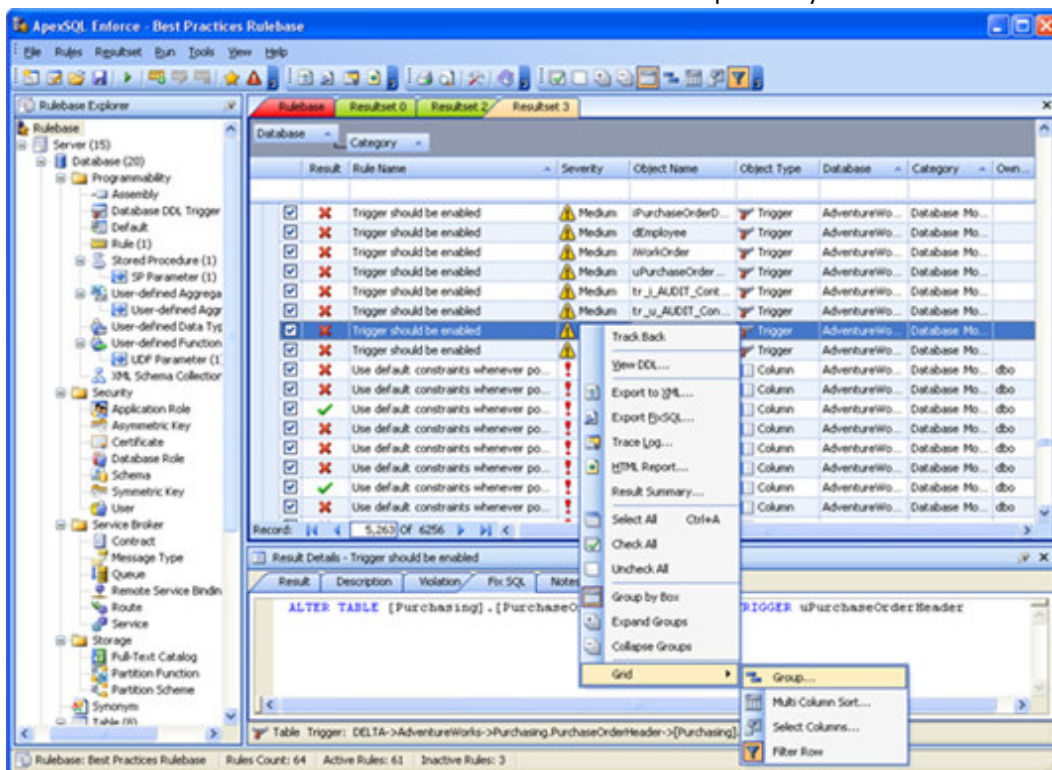
Even though ApexSQL Enforce allows you to create your own rulebases from scratch, this doesn't mean that you have to. Users can run our "Best Practices" rulebase—written by SQL Server MVPs—straight out of the box. Existing rules can be changed, deleted, or deactivated while new rules can be quickly added.

## Loaded with tons of Powerful Features

Users who are accustomed to ApexSQL's feature-rich tools won't be disappointed with ApexSQL Enforce. ApexSQL Enforce has Customizable Severities and Categories, Import/Export and reporting capabilities, easy-to-manipulate Impact Scores/Thresholds, a free command line interface, a built-in rule editor with Intellisprompt, and tons of other features that allow users to instantly enforce standards.

## Don't just find problems ... fix them too!

ApexSQL Enforce can create a single SQL Script that will fix all detected problems. FixSQL is the SQL script to reverse all detected violations. It's fully customizable so you have full control on how you want to implement your fixes.



## ApexSQL Enforce Key Features

- Fully customizable, programmable .NET rules that can be written with a powerful, built-in Rule Editor that features parsing, syntax highlighting, inline error-checking, and Intellisprompt
- A complete Metadata Object Model that extends SMO with many additional properties, attributes, and helper functions streamlined for creating rules
- Customizable Severities, Categories, Impact Scores, and Success/Failure thresholds
- FixSQL script allows users to correct violations as they are detected. The Export FixSQL feature can be run as a single script to correct the database all at once
- Powerful HTML report details all violations, impact scores by severity, category, and database level verdicts
- Rulebases can be run against multiple databases at the same time
- Rules can be imported and exported from/to other rulebases using a sophisticated Import/Export Wizard
- Command Line Interface allows users to review databases via scheduled, overnight jobs outputting results into HTML reports, XML exports, and/or FixSQL scripts